

PNI GLOBAL SDN. BHD

COMPANY PROFILE

PNI GLOBAL SDN BHD

19-1 Jalan Kuchai Maju 7 Jalan Klang Lama, 58200 Kuala Lumpur

TEL: 03 7982 1050 FAX: 03 79820059

www.pniglobal.com Email: sales@pniglobal.com



PNI Global Shd Bhd. was incorporated in Malaysia in 2005 to market and distribute a wide range of professional and high quality security products & Telecommunication

At PNI Global Sdn Bhd, we not only strive to provide you with products that will help you run your business more efficient. We also offer you a valuable edge over your competitors by providing you with expert consultation, global support, strong foundation in Solutions implementation and integration.

We Supply and Install Security system for residence and commercial sector. We bring together highly-trained, professional technicians and a state-of-the-art product line to provide the most comprehensive security system. Our sales consultant is very experience and has been in the security industry for almost 20 years.

PNI GLOBAL are also a postpaid and prepaid telephony services provider. We deliver cost effective, high Quality voice/fax/data communication in more than 30,000 cities in 250 countries worldwide at attractive rates.

We focus on exceptional customer support, because we believe that any loyal and long-term customer deserve nothing less.

OUR VISION

To be the leading edge global solutions provider and the foremost system integrator in MALAYSIA.

OUR MISSION

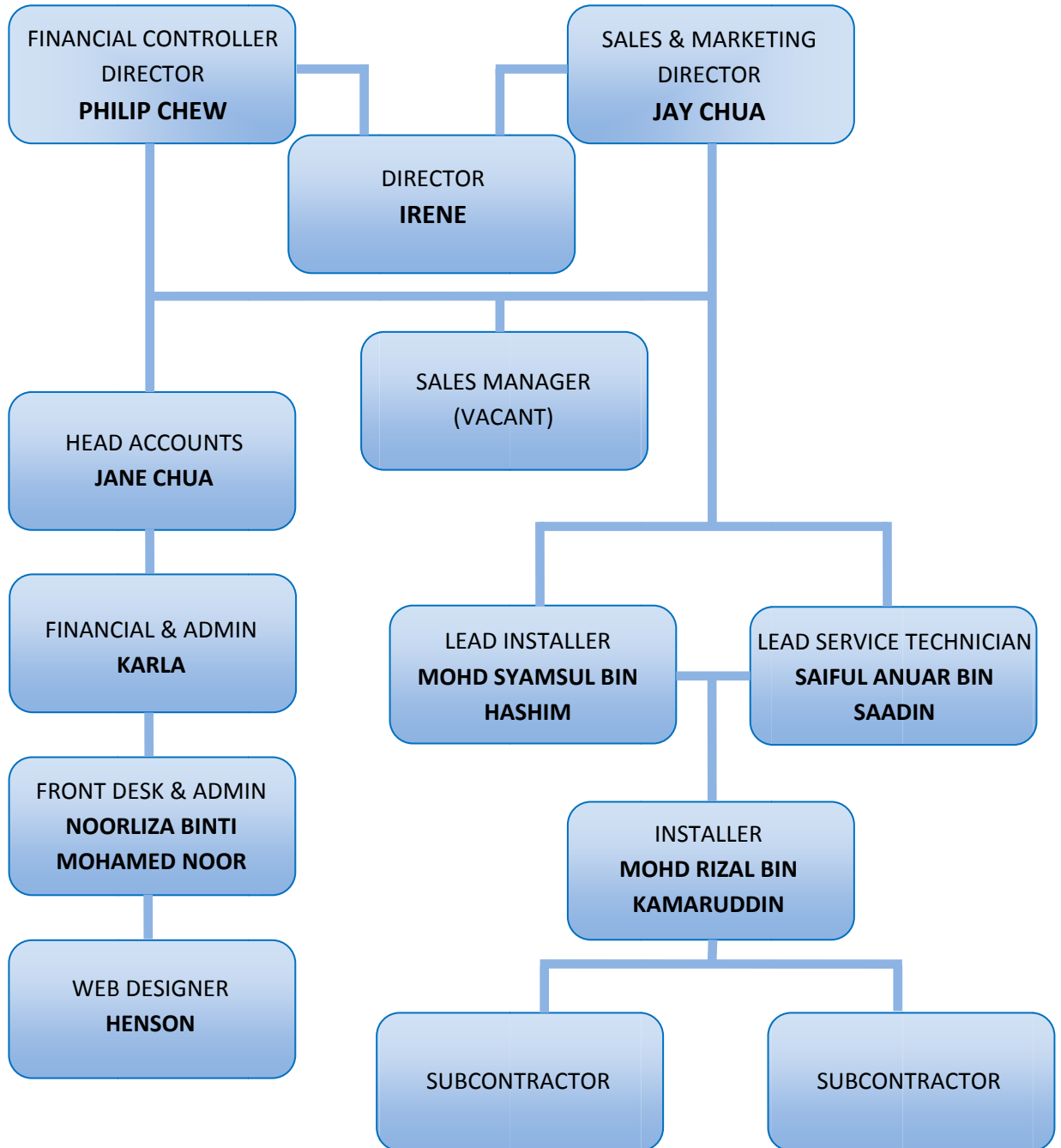
Our mission is to continue to innovate and provide cost efficient product and services to our customer without compromising on qualities and services.

YOUR ONE STOP SECURITY AND TELECOMMUNICATION

www.pniglobal.com



PNI GLOBAL SDN BHD ORGANIZATION CHART



YOUR ONE STOP SECURITY AND TELECOMMUNICATION



Company Information

Company Name : PNI Global Sdn Bhd
Reg. No. : 721129-T
Headquarter : 19-1 Jalan Kuchai Maju 7,
Off Jalan Klang Lama,
58200 Kuala Lumpur
General LINE : 03 7982 1050 / 016-225-1972
Technical Support : 03 7982 4444 / 016-337-0134 / 016-337-0133
Sales : 03 7982 2626 / 016-216-2205 / 016-337-132
Installation : 016-337-135 / 016-337-0130 / 017-256-6852 / 017-360-1042
Fax : 03 7982 0059
Industry : Security system & Telecommunication
No. of Employee : 15
Website : www.pniglobal.com
Email : sales@pniglobal.com

OUR PRODUCT

PNI GLOBAL Sdn Bhd specializes such as...

CCTV
Access control systems
Alarm systems
ADT 24 Hours Central Monitoring Station
PABX Key phone System
HOME / OFFICE Network
CORPORATE Call Discounted Services



CCTV

Closed Circuit Television form as eyes surveillance of any protected premises. CCTV systems are now designed to further its capability and versatility with particular reference to multi camera system. Whether your needs are basic video surveillance or a state-of- art CCTV security system, we are your one stop resource.

So when your business calls for DVR system, Remote monitoring, VCRs, Dome camera, CCD Camera, outdoor camera with housing, call on **PNI Global**.

PNI Global Sdn Bhd dedicated to disseminating general information concerning CCTV and linking customers to quality organizations who can meet their specific requirements. Realizing that the average person, when they begin to look into CCTV, has little way of knowing where to find expert advice at reasonable cost, we help you bring together some of the top people and organizations working in this field.

WHY IS CCTV NECESSARY

The importance of having a professionally designed specification can be seen from the fact that when the police seek for CCTV evidences in court it is found to be inadmissible in at least 75% of cases. While it is true that almost anyone can look at a location and suggest a number of Cameras, only those who have experience in this field, through an understanding of the principles of optical science, will generally be able to give the customer a picture with the best definition or coverage. Often it is also possible to give clients "added value" by locating Cameras, and utilizing lenses which are able, not only to view the area of concern, but also give peripheral vision of other points of interest. A very simple example of the above is that one company may provide a view of everyone entering through a door while another may also incorporate an overview of the room the person is entering without any increase in cost or equipment. In many cases, careful questioning reveals that a picture of people leaving rather than entering the area may, in fact, provide much more valuable evidence in the event of a crime.

We represent industry-leading manufacturers of the latest CCTV systems such as **Sony, Sanyo, Samsung, Pelco, Evermedia, Everfocus etc**

OUR CCTV PRODUCT BRAND

SHARP SONY PELCO

AVTECH SAMSUNG Panasonic
ideas for life



DOOR ACCESS CONTROL SYSTEM

ACCESS CONTROL SYSTEMS use various means to identify individuals and to control where those individuals are able to go within premises. A key is actually an access control system but usually the term refers to an electronic system. The original types required entering a code into a key pad and these are still in use.

Individuals are now also often identified using PIN, Proximity Card and My Fare card. Other systems can read finger prints, eye prints and voice recognition. Methods used to physically control entry points include electric locks and strong electric magnets which hold doors closed until released.

We represent industry-leading local and imported manufacturers of the latest Access systems such as **Fingertech, Micro Engine, Intego etc**

OUR ACCESS SYSTEM PRODUCT BRAND



ALARMS SYSTEMS

Alarm Systems (Burglar Alarms, Intruder Alarms, Security Systems) these are the names used to describe a combination of electronic devices connected to each other in such a way so as to detect unauthorized entry of a premises. The system may then activate locally (sirens etc) and/or send a signal to a control room where further action can be taken.

We represent industry-leading local and imported manufacturers of the latest Alarm systems such as **Paradox, FBI, SUPA 8, DF alarm etc**

OUR ALARM SYSTEM BRAND



Personalized Service, Innovative Technology since 1989





ADT 24 Hours CENTRAL MONITORING CENTRE

An Invisible Blanket of Protection

We've developed a variety of products and services to meet your needs. This includes 24/7 monitoring for:

- Burglary
- Threat of Fire
- Duress
- Police Emergencies
- Medical Emergencies

Advanced Technology. 24-Hour Protection.

ADT Central Monitoring Station helps protect the people and things you value most, 24 hours a day, 7 days a week. This gives ADT the ability to offer you continuous security, and it's just one of the reasons why ADT is the top security company in the world.

How ADT Monitored Security Works.

A monitored security system is connected 24/7 to a team of security and safety professionals to better protect the home & business against burglary, fire and duress. If a burglar breaks into the premise, the alarm is triggered automatically and the system immediately sends a signal to a continuously staffed monitoring center.

In the event of a duress or panic signal, emergency services will also be requested by the monitoring centre operator.

A fire detection system continuously checks for symptoms of fire. The moment they are sensed, the system sends a signal to a continuously staffed monitoring center where a safety professional will alert the fire department.

Whether you're there or away, you have protection, which acts like an invisible blanket around the people and things that value most to you.

WE are ADT Authorized Dealer.



OUR AUTHORIZED BRAND



PABX / KEYPHONE

PABX / KEY Phone is a telephone with the extra buttons and the intelligence to allow incoming calls to be transferred to other extensions. Extra lights, either on the phone console or in the handset, indicate the status of lines and extensions; extra keys facilitate connections between extensions and external lines.

We represent industry-leading local and imported manufacturers of the latest PABX & KEYPHONE systems such as **NEC** and **Panasonic**

OUR PABX / KEYPHONE BRAND



HOME / OFFICE NETWORK

A **computer network** is two or more **computers** connected together using a telecommunication system for the purpose of communicating and sharing resources.



CORPORATE IDD STD CALLS DISCOUNT

The basic purpose of **PNI Global** is to provide superior voice/fax/data communications services in the global market, while striving to render excellence of service and quality of product in order to optimize market growth with sustainable profitability.

PNI Global package offers both international (IDD) and domestic (STD) calls at reduced call rates. Global Gateway postpaid service offers great savings up to 80% to more than 200 countries across the world.

From large corporations to small corporation office, we can save from thousand of RM to few hundreds of RM of telephone bills; **PNI Global** post paid will help you reduce your telecommunication bills.

Super voice/fax/data communications

Great savings up to 80% to more than 200 countries across the world.

Our mission is to continue to

innovate and provide cost efficient product and services to our customer without compromising on quality and services.

FREE ADVICE AND QUOTATION

We are now able to offer free services including site surveys, drawing up plans, budget costing and system design to those who are seriously considering having a security system installed by a professional installation company. We are able to provide equipment on a supply-only basis to other customers around the world. In some instances we may be able to put overseas enquirers in contact with experienced Security installers in their own country.

WE DESIGN STATE OF ART
SECURITY SYSTEM FOR SMALL,
MEDIUM TO LARGE
ORGANIZATION



**We bring together highly-trained, professional
Technicians and a state-of-the-art product line
To provide the most comprehensive
Security systems.**



OUR CUSTOMER REFERENCE

CUSTOMER NAME	BUSINESS	SYSTEM INSTALL
HITACHI ELEVATOR ENGINEERING (M) SDN BHD	CORPORATE	CARD ACCESS
TNB GENERATION SDN BHD	CORPORATE	CARD ACCESS
INSSTITUTE PERTANIAN SERDANG	GOVERMENT	CARD ACCESS
HEI TECH PADU BERHAD	CORPORATE	BIOMETRIC ACCESS
FOCUS POINT (SRI HARTAMAS)	CORPORATE	CCTV
PETALING TIN BERHAD	CORPORATE	BIOMETRIC ACCESS
MY EG SDN BHD	CORPORATE	CARD ACCESS
KUCHAI BREM PARK CONDOMINIUM	CONDOMINIUM	CARD ACCESS
INTERGRA FORWARDING SDN BHD	CORPORATE	CARD ACCESS CCTV ALARM
RESYTAURANT IMBRAHIM MAJU	RESTAURANT	CCTV
MALAYSIAN INDUSTRIAL DEVELOPMENT AUTHORIZED (MIDA)	GOVERMENT	CARD ACCESS
THE SKIN FOOD (ALAMANDA)	CORPORATE	CCTV
KEN GROUTING SDN BHD	CONDOMINIUM	TELECOMMUNICATION
KEN HOLDINGS BHD	CONDOMINIUM	TELECOMMUNICATION
GOUMAN INTERNATIONAL SDN BHD	CORPORATE	TELECOMMUNICATION
GOUMAN PORT DICKSON	CORPORATE	TELECOMMUNICATION
VISTANA HOTEL (KUALA LUMPUR)	HOTEL	CCTV
COLUMBIA ASIA (SHAH ALAM)	HOSPITAL	MATV
COLUMBIA ASIA (PUCHONG KL)	HOSPITAL	DOOR ACCESS

CUSTOMER NAME	BUSINESS	SYSTEM INSTALL
PUSAT HIDROGRAFI NEGARA (TLDM)	GOVERNMENT	CCTV
KEMENTERIAN KESIHATAN	GOVERNMENT	BIOMETRIC ACCESS
INSTITUT PERAKAUNAN NEGARA (SERBAK BERNAM)	GOVERNMENT	CARD ACCESS
SISTEM LINGKARAN-LEBUHRAYA KAJANG SDN BHD	CORPORATE	CCTV
ECON-FRIENDLY INDUSTRIES SDN BHD	CORPORATE	CCTV
GOGGLES HOLDINGS	CORPORATE	CCTV
OBERMAIER MOTORS SDN BHD	CORPORATE	CCTV ALARM
ZOUK SPA SDN BHD	CORPORATE	CCTV
Q TEL MEDIA (M) SDN BHD	CORPORATE	BIOMETRIC ACCESS CCTV ALARM
ADA CELLWORKS SDN BHD	CORPORATE	CARD ACCESS
DATAKOM SOUTH EAST ASIA (M) SDN BHD	CORPORATE	NETWORKING
ASIA PACIFIC ENGINEERING CONSORTIUM SDN BHD	CORPORATE	CCTV CARD ACCESS NETWORKING ALARM
DATO RAYMOND SOH (BUKIT JELUTONG)	RESIDENTIAL	CCTV ALARM AUTO GATE
MS ANGELA (BUKIT DAMANSARA)	RESIDENTIAL	CCTV ALARM INTERCOM
MR JACK FOONG (OUG)	RESIDENTIAL	CCTV ALARM INTERCOM
MR RALPH V.LARIEN (AMPANG JAYA)	RESIDENTIAL	CCTV

THANK YOU